

B FLAT VERSION

CHORDS AND MODES USED IN STEVE KUHN'S SAGA OF HARRISON CRABFEATHERS (POEM FOR NO 15)

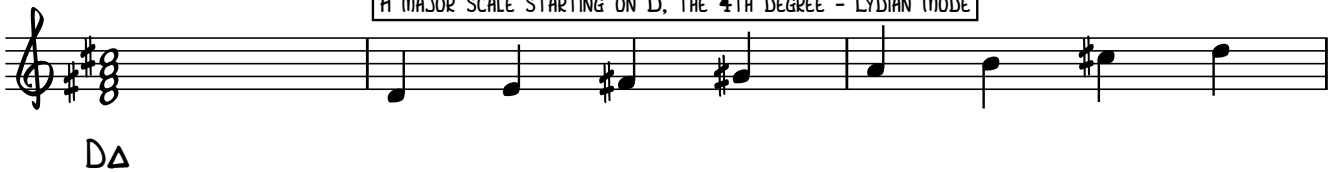
A MAJOR SCALE



A MAJOR SCALE STARTING ON F SHARP, THE 6TH DEGREE - AELIAN MODE OR NATURAL MINOR



A MAJOR SCALE STARTING ON D, THE 4TH DEGREE - LYDIAN MODE



A MAJOR SCALE STARTING ON B, THE 2ND DEGREE - DORIAN MODE



THESE ARE THE SAME FOR THE OTHER KEY CENTRES USED, BASED ON F AND E FLAT MAJOR SCALES