

CHORDS AND MODES USED IN STEVE KUHN'S SAGA OF HARRISON CRABFEATHERS (POEM FOR NO 15)

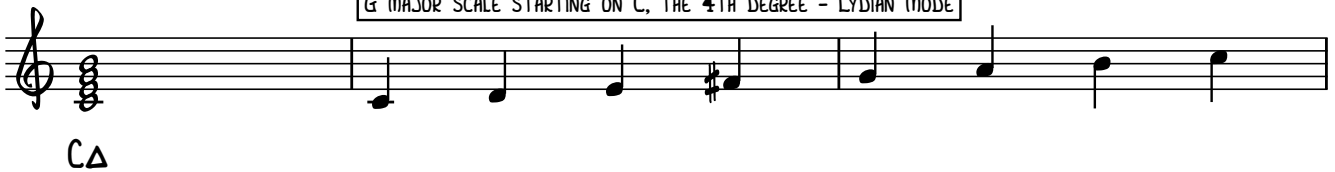
G MAJOR SCALE



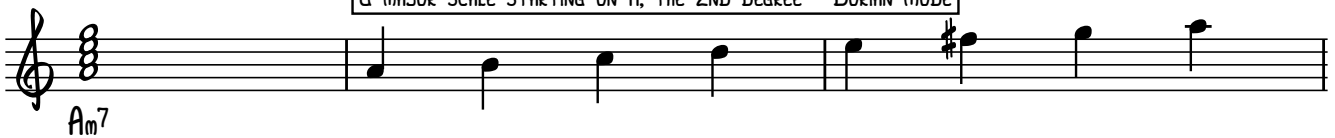
G MAJOR SCALE STARTING ON E, THE 6TH DEGREE - AEOLIAN MODE OR NATURAL MINOR



G MAJOR SCALE STARTING ON C, THE 4TH DEGREE - LYDIAN MODE



G MAJOR SCALE STARTING ON A, THE 2ND DEGREE - DORIAN MODE



THESE ARE THE SAME FOR THE OTHER KEY CENTRES USED, BASED ON F AND E FLAT MAJOR SCALES